

 **TEREX CRANES**

TEREX

MODEL NO.

RT 780

HYDRAULIC CRANE

72.55 METRIC TON

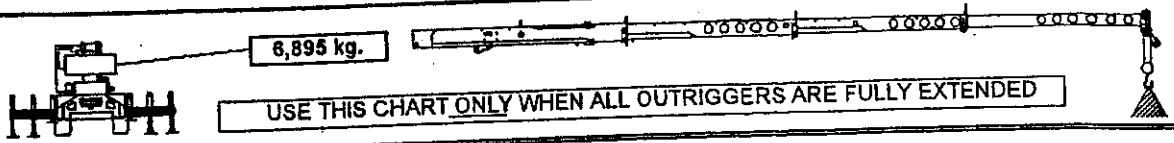
P.C.S.A. CLASS 10 - 316

LOAD RATINGS

Do not operate this crane unless
you have read and understood the
information in this book.

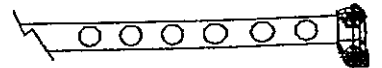
This book must contain 30 pages.

**DO NOT REMOVE THIS BOOK
FROM THE CRANE**



RATED LOAD ON OUTRIGGERS

LOAD RADIUS (m)	BOOM ANGLE (DEG) REF.	OVER REAR (kg)	360° (kg)	LOAD RADIUS (m)	BOOM ANGLE (DEG) REF.	OVER REAR (kg)	360° (kg)	LOAD RADIUS (m)	BOOM ANGLE (DEG) REF.	OVER REAR (kg)	360° (kg)
BOOM LENGTH 12.1 m				BOOM LENGTH 16.3 m							
3.0	69.6	72550 *	72550 *	3.0	75.2	46450 *	46450 *	BOOM LENGTH 20.0 m			
3.5	67.0	58500 *	58500 *	3.5	73.3	46450 *	46450 *	4.5	73.5	36900 *	36900 *
4.0	64.3	53850 *	53850 *	4.0	71.4	46150 *	46150 *	5.0	71.9	35450 *	35450 *
4.5	61.6	49900 *	49900 *	4.5	69.6	45650 *	45650 *	6.0	68.9	32850 *	32850 *
5.0	58.8	46450 *	46450 *	5.0	67.7	44100 *	44100 *	7.0	65.7	30700 *	30700 *
6.0	52.8	39100 *	39100 *	6.0	63.7	39100 *	39100 *	8.0	62.5	28750 *	28750 *
7.0	46.3	32850 *	32850 *	7.0	59.7	33300 *	33300 *	9.0	59.2	25100 *	23850 *
8.0	38.9	28100 *	28100 *	8.0	55.4	28550 *	28550 *	10.0	55.7	20950 *	19500 *
9.0	29.9	24400 *	23050 *	9.0	50.9	24900 *	23650 *	12.0	48.2	14950 *	13950 *
10.0	16.2	20100 *	18650 *	10.0	46.1	20750 *	19300 *	14.0	39.7	11300 *	10500 *
10.3	0	12900 *	12900 *	12.0	34.8	14700 *	13700 *	16.0	29.1	8750 *	8150 *
				14.0	17.6	10950 *	10200 *	18.0	10.8	6900 *	6450 *
				14.6	0.0	8600 *	8600 *	18.2	0	6400 *	6250 *
BOOM LENGTH 23.6 m				BOOM LENGTH 27.3 m				BOOM LENGTH 30.9 m			
6.0	72.3	28550 *	28550 *	6.0	74.7	25500 *	25500 *	8.0	72.7	18350 *	18350 *
7.0	69.7	26450 *	26450 *	7.0	72.5	23300 *	23300 *	9.0	70.8	16750 *	16750 *
8.0	67.1	24600 *	24600 *	8.0	70.3	21050 *	21050 *	10.0	68.8	15400 *	15400 *
9.0	64.4	22800 *	22800 *	9.0	68.0	19200 *	19200 *	12.0	64.7	13150 *	13150 *
10.0	61.6	21050 *	19650 *	10.0	65.7	17600 *	17600 *	14.0	60.5	11450 *	10800 *
12.0	55.9	15100 *	14100 *	12.0	61.0	15100 *	14150 *	16.0	56.1	9100 *	8500 *
14.0	49.7	11400 *	10650 *	14.0	56.0	11500 *	10750 *	18.0	51.5	7300 *	6800 *
16.0	42.8	8950 *	8350 *	16.0	50.7	9000 *	8450 *	20.0	46.5	5950 *	5550 *
18.0	34.8	7150 *	6650 *	18.0	44.9	7250 *	6750 *	22.0	41.0	4900 *	4550 *
20.0	24.6	5750 *	5350 *	20.0	38.4	5900 *	5500 *	24.0	34.8	4050 *	3750 *
21.9	0.0	4700 *	4350 *	22.0	30.8	4800 *	4450 *	26.0	27.4	3350 *	3050 *
				24.0	20.7	3950 *	3650 *	28.0	17.2	2750 *	2450 *
				25.6	0.0	3350 *	3050 *	29.2	0.0	2400 *	2150 *
BOOM LENGTH 34.6 m				BOOM LENGTH 38.3 m							
9.0	72.9	14250 *	14250 *	10.0	73.0	11200 *	11200 *				
10.0	71.1	13750 *	13750 *	12.0	69.8	11150 *	11150 *				
12.0	67.6	12100 *	12100 *	14.0	66.6	9850 *	9850 *				
14.0	63.9	10500 *	10500 *	16.0	63.2	8650 *	8550 *				
16.0	60.1	9100 *	8550 *	18.0	59.8	7400 *	6900 *				
18.0	56.2	7350 *	6850 *	20.0	56.3	6050 *	5650 *				
20.0	52.0	6000 *	5600 *	22.0	52.5	5000 *	4650 *				
22.0	47.7	4950 *	4600 *	24.0	48.6	4150 *	3850 *				
24.0	42.9	4100 *	3800 *	26.0	44.4	3450 *	3150 *				
26.0	37.7	3400 *	3100 *	28.0	39.9	2850 *	2600 *				
28.0	31.7	2800 *	2550 *	30.0	34.8	2350 *	2100 *				
30.0	24.5	2300 *	2050 *	32.0	29.0	1950 *	1700 *				
32.0	13.9	1850 *	1600 *	34.0	21.8	1550 *	1300 *				
32.9	0.0	1700 *	1450 *	36.0	10.5	1200 *	1000 *				
				36.5	0.0	1150 *	900 *				

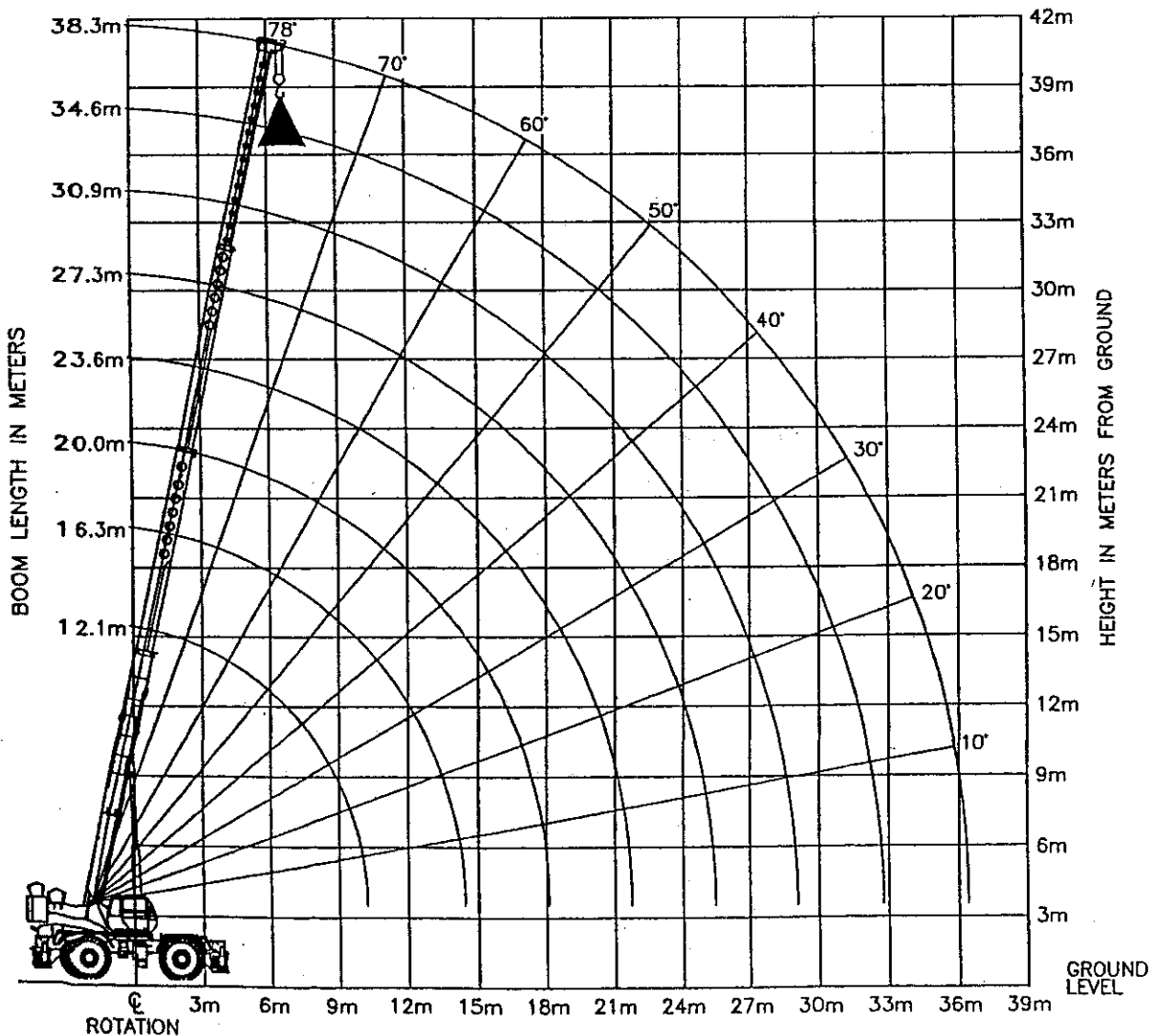


Add 45 kg to the chart values if the AUXILIARY BOOM HEAD SHEAVE is NOT ERECTED

- SET-UP:**
1. Crane load ratings are based on the crane being leveled and standing on a firm and uniform surface.
 2. Crane load ratings on outriggers are based on all outrigger beams being positioned according to the applicable load chart and the tires raised free of the supporting surface.

- OPERATION:**
1. **CRANE LOAD RATINGS MUST NOT BE EXCEEDED. DO NOT ATTEMPT TO TIP THE CRANE TO DETERMINE ALLOWABLE LOADS.**
 2. When either radius or boom length, or both, are between listed values, the smaller of the two listed load ratings shall be used.
 3. **EXTRA-CAUTION ZONE** - Tipping can occur with some boom/jib combinations at radii within this area without any load on the hook.
 4. The boom angles shown on the Capacity Chart give an approximation of the operating radius for a specified boom length. The boom angle, before loading, should be greater to account for boom deflection. It may be necessary to retract the boom if maximum boom angle is insufficient to maintain rated radius.
 5. Rated loads include the weight of hook block, slings and auxiliary lifting devices. Their weights shall be subtracted from the listed rated load to obtain the net load that can be lifted. Rated lifting capacities are based on correct reeving. Deductions must be made for excessive reeving. Any reeving over the minimum is considered excessive. Deduct for each foot of excessive wire rope before attempting to lift a load. See the Hoist Tackle Chart for rope information.
 6. Power telescoping boom sections must be extended equally.

BOOM DEFLECTIONS NOT SHOWN



INFORMATIONAL DATA

HOIST TACKLE CHART

This chart only represents the maximum permissible hoist line load per parts of line. You must refer to the proper lift charts for machine rated loads.

MAXIMUM PERMISSIBLE HOIST LINE LOAD

LINE PARTS	1	2	3	4	5	6	7	8	9	10	11	12
WIN & AUX. HOIST	6260	12520	18780	25040	31300	37560	43820	50080	56340	62600	68860	72550

WIRE ROPE: 19.05mm ROTATION RESISTANT 34 X 7 COMPACTED STRAND, GRADE 2160, MINIMUM BREAKING STRENGTH 31.3 METRIC TONS. WEIGHT 1.845 kg/m. 19.05 6 X 19 OR 6 X 37 IPS IWRC, PREFORMED RIGHT REGULAR LAY MINIMUM BREAKING STRENGTH 23.22 METRIC TONS. WEIGHT 1.548 kg/m

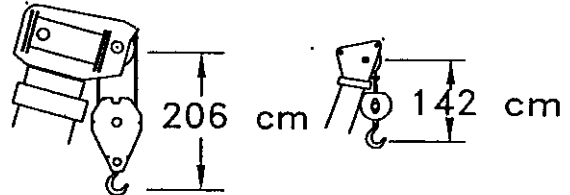
TIRE INFLATION CHART

RECOMMENDED TIRE PRESSURE				
TIRE SIZE	STATIONARY	CREEP	4.0 km/hr	TRAVEL
29:50 X 25-28 PR	558.5 kPa	558.5 kPa	448.2 kPa	379.2 kPa

HOOK BLOCK WEIGHTS

HOOK BLOCK WEIGHTS	
HOOK & BALL	190.1 kg
HOOK BLOCK (5 SHEAVE)	729.4 kg

DIMENSIONS ARE FOR LARGEST KOEHRING FURNISHED HOOK BLOCK AND HEADACHE BALL. WITH ANTI-TWO BLOCK ACTIVATED.



MACHINE EQUIPMENT

- COUNTERWEIGHT :
6,196 kg Counterweight and 699 kg slab
or
6196 kg Counterweight and auxiliary winch with wire rope
- OUTRIGGER SPREAD 11.34 m from center of outrigger float to center of outrigger float across the longitudinal axis of the machine.
- Powered boom length 12.1m retracted to 38.3 m extended.
- Crane height 6.174 m, length 22.96 m, width 5.342 m., Wheelbase 6.207 m.

CLAMSHELL, MAGNET, AND CONCRETE BUCKET SERVICE

- Maximum boom length for clamshell and magnet service is 15.24 m.
- Weight of clamshell or magnet, plus contents are not to exceed 2,722 kg pounds or 90% of rated lifting capacities, whichever is less. For concrete bucket operation, weight of bucket and load must not exceed 90% of rated lifting capacity.

OUTRIGGER PAD LOADS

- When lifting loads shown in these capacity charts, no single pad load will exceed 54,430 kg.

BASIC DIMENSIONS

